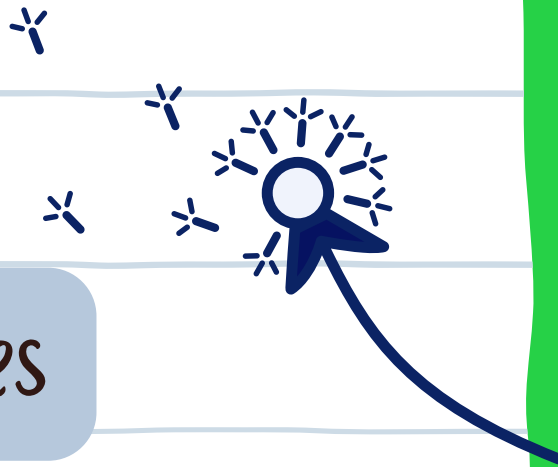
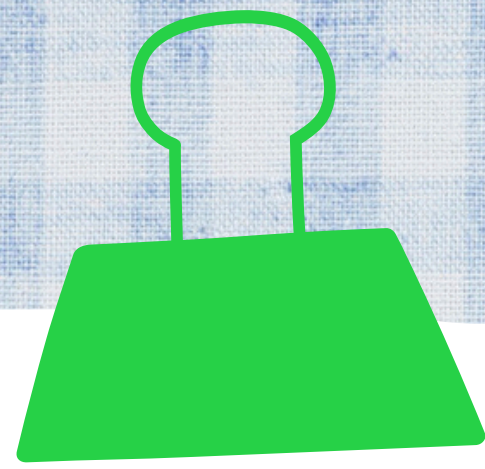


MANDATORY REPORTER TRAINING

CHILD ABUSE PREVENTION MONTH

Presented by Cowlitz & Clark County Child Advocates





WHY AWARENESS MATTERS

- April is Child Abuse Prevention Month
- We all play a role in recognizing, preventing, and reporting suspected child abuse and neglect

- Prevention starts with community understanding



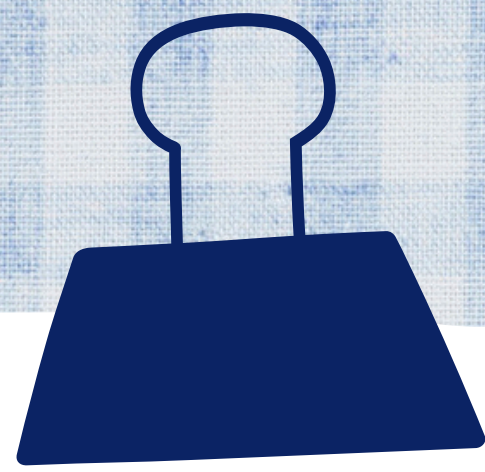


WHAT IS CHILD ABUSE & NEGLECT?

"Abuse or neglect" includes any act or failure to act that results in harm or risk to a child's health, welfare, or safety.

- Physical harm
- Sexual abuse/exploitation
- Negligent treatment or maltreatment
- Abandonment





RECOGNIZING SIGNS IN CHILDREN



Signs may include:

Unexplained injuries or inconsistent explanations

Extreme withdrawal or behavioral changes

Poor hygiene or unaddressed medical needs

Fear of going home

Statements indicating fear or unsafe conditions

No single sign confirms abuse — look at patterns and concerning behaviors.



NEGLECT VERSUS POVERTY

Poverty

- Lack of financial resources
- May impact:
 - Housing stability
 - Access to food, clothing, transportation
 - Childcare options
- Not caused by caregiver unwillingness

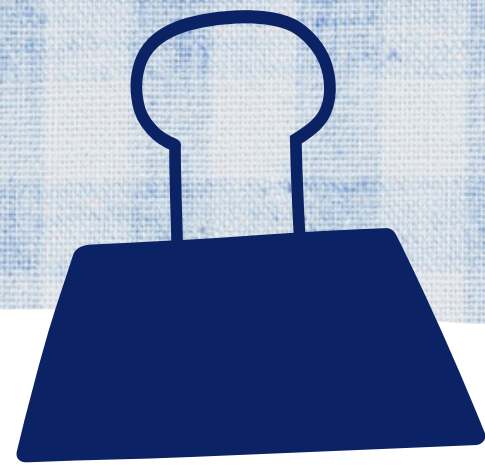




NEGLECT VERSUS POVERTY

Neglect (Reportable Concern)

- Caregiver fails to provide for a child's basic needs when able to do so
- Includes:
 - Inadequate supervision
 - Failure to provide food, shelter, medical care, or education
 - Abandonment or chronic inattention

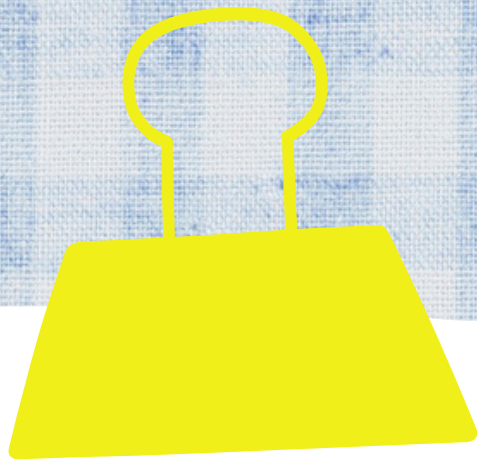



NEGLECT VERSUS POVERTY


What Mandatory Reporters Should Ask


- Is the caregiver willing but unable due to lack of resources?
- Have supports or services been offered or accessed?
- Is the child's safety or well-being at immediate risk?


Poverty = inability / Neglect = failure despite ability



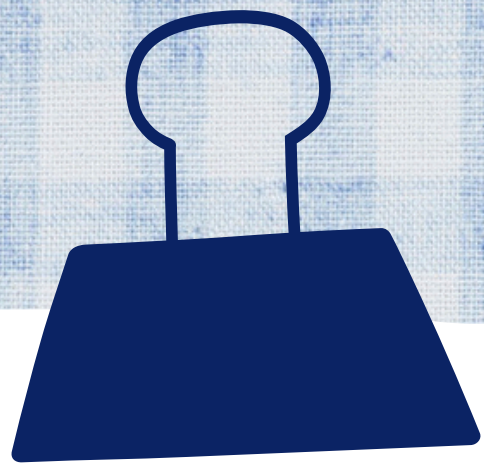
 **Blind spots Challenge assumptions**
medousa1000





 [Watch on !\[\]\(a8d88ebf628da168cd51d7459954230e_img.jpg\) YouTube](#)

The video player shows a woman with dark hair wearing a white blazer, looking directly at the camera. The background is a blurred office setting. The video player interface includes a share icon in the bottom left and a 'Watch on YouTube' button in the bottom right.



CONSCIOUS AND UNCONSCIOUS BIAS

Conscious Bias

A bias you are aware of and acting with intent.

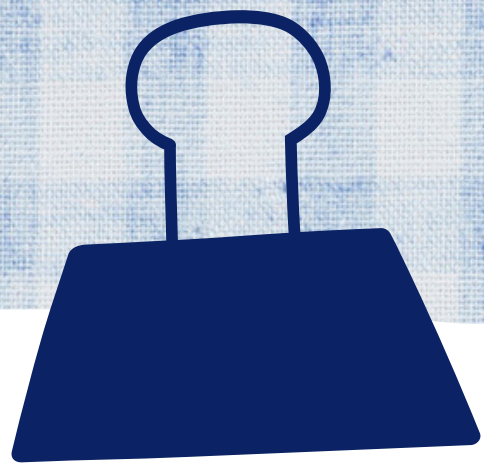


BREAK THE BIAS

Statistics show race and poverty related disparities disproportionality impact child welfare.

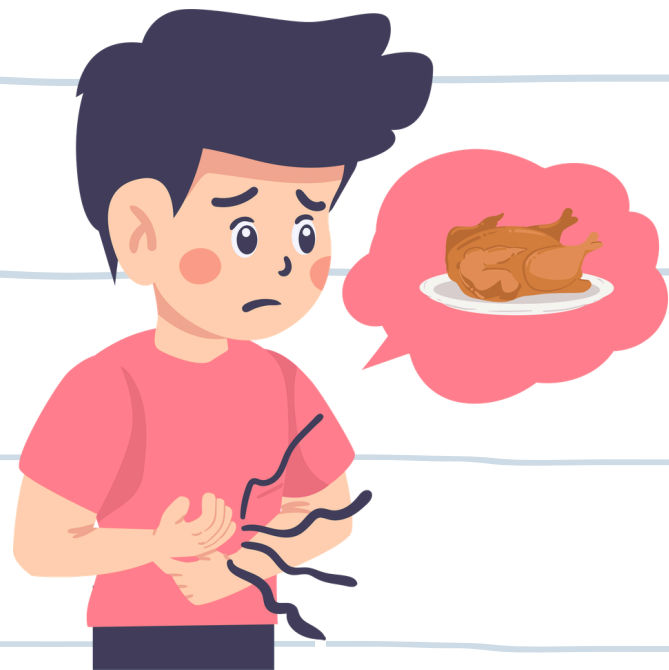
Unconscious Bias

A bias that you may not be aware you possess. These beliefs are outside of a person's awareness.



SCENARIO #1 – FOOD INSECURITY

A teacher notices a student frequently comes to school very hungry and asks classmates for food. The child shares that there is "not much food at home right now." The caregiver has recently lost their job.



Does this situation rise to reportable neglect?



SCENARIO #2 – LACK OF SUPERVISION

A 6-year-old is regularly seen playing outside alone late into the evening. When asked, the child says their caregiver is home but "busy sleeping."



Does this situation rise to reportable neglect?

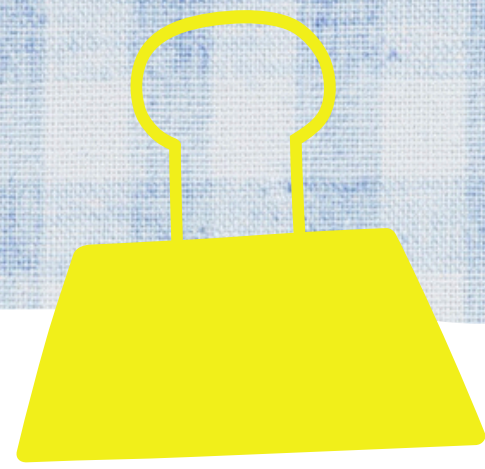


SCENARIO #3 – HYGIENE AND CLOTHING

A student often comes to school in dirty clothes and has a noticeable body odor. The family is currently living in a car after being evicted.



Does this situation rise to reportable neglect?



SCENARIO #4 – MEDICAL CARE

A child has a persistent, untreated infection. The school has notified the caregiver multiple times, and low-cost/free clinics are available nearby, but the caregiver has not sought care.



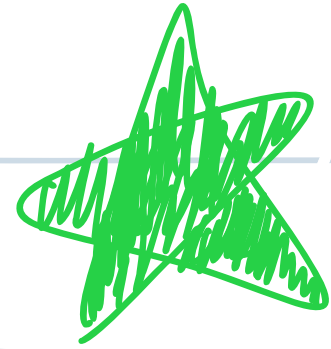
Does this situation rise to reportable neglect?



RECOGNIZE, RECORD & REPORT



WHEN IN DOUBT - CALL IT IN!



WHO MUST REPORT

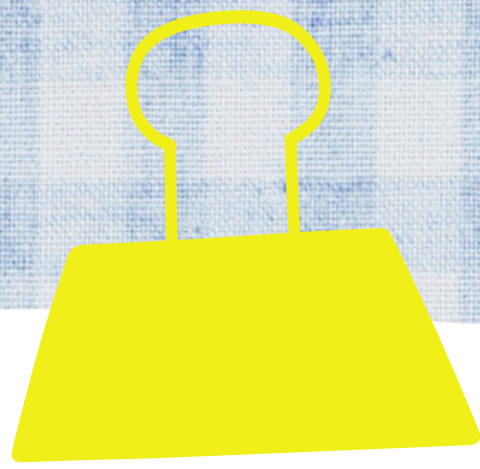


- School personnel
- Healthcare providers
- Social service professionals

- Child care providers
- Law enforcement
- Volunteers working with children



ANYONE can make a report if they reasonably suspect abuse.



WHEN TO REPORT

You must report immediately when you have reasonable cause to believe a child has been abused or neglected.

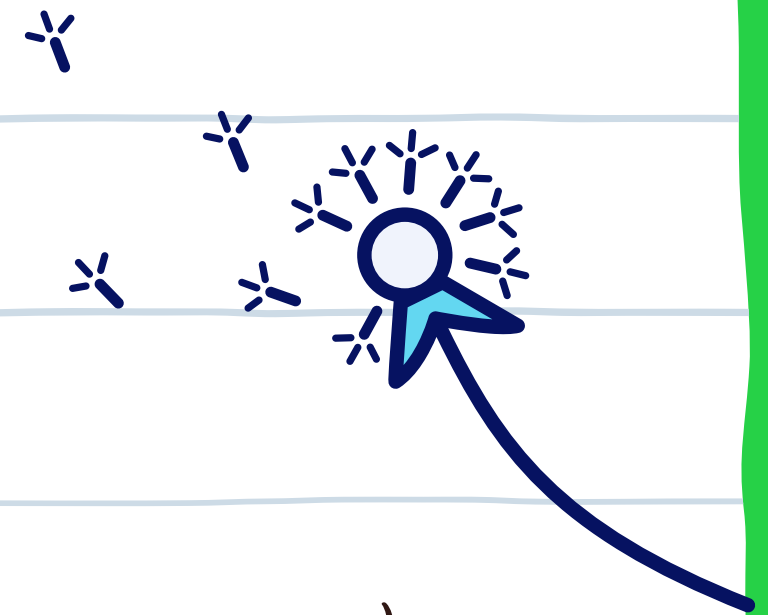


How To Report:

DCYF Child Abuse Hotline:

1-866-363-4276 (1-866-END-HARM)

(available 24/7)



You may also report to local law enforcement 911 (emergency) 311 (non-emergency)



WHAT HAPPENS AFTER A REPORT

- DCYF or law enforcement screens the report
- If screened in an investigation or assessment occurs
- Services may be offered to support the family
- Action is taken to ensure the child's safety

Reporting helps protect children and connects families to supports.





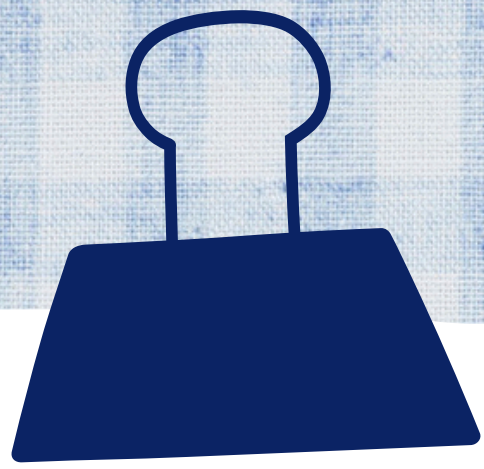
REPORTING IN NUMBERS



In 2023 there were 129,000 received reports.
85,000 of those reports were screened out.

This means 85,000 reports did not meet the legal
definition of abuse and neglect.

That does not mean that families do not need support and resources.



SUPPORTING FAMILIES

Not all struggles require a report; some families may need support services such as:

- ♥ Parenting resources
- ♥ Concrete support (food, housing, healthcare)
- ♥ Parental stress support

These services help strengthen protective factors and prevent harm.

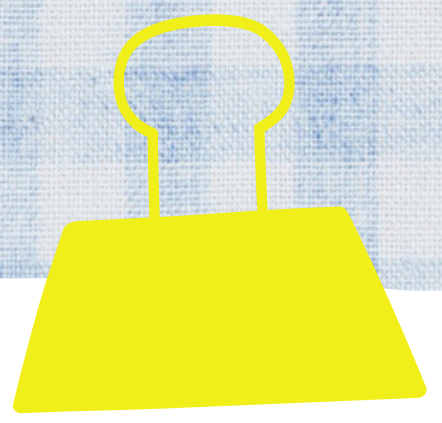


HOW OUR COMMUNITY CAN HELP

You don't need to be a professional to help — you can:

- Learn the signs
- Use your voice to report concerns
- Support local families and caregivers
 - Share prevention resources





THANK YOU

Presented by CCCA

